



KDE4



KDE4



the start of something amazing



Dawn of a new Desktop



about /me

Lydia Pintscher

Amarok Community Manager

Amarok Rokymoter

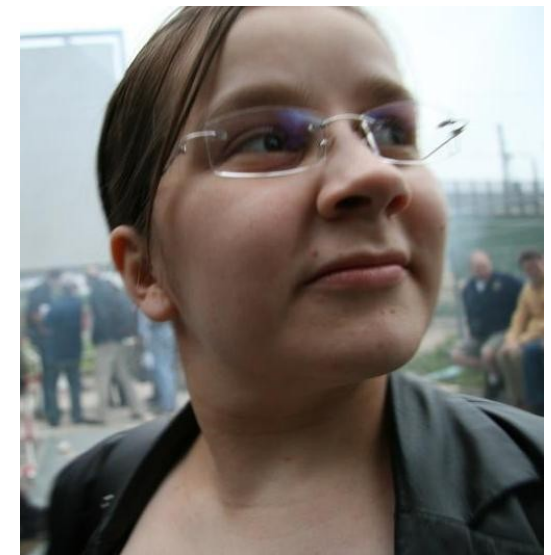
KDE Helper and Advocate

Kubuntu Helper and Advocate

student of computer science

>> Free and Open Source Software Enthusiast

www.lydiapintscher.de





Dawn of a new Desktop



The KDE Community - Figures

- 11 years old (**Happy Birthday!**)
- 1652 SVN Accounts
- 2800 commits weekly
- 5 million lines of code
- 65 languages
- 15-25 million users
- 60% - 70% of the Free Desktops run KDE





Dawn of a new Desktop



Beauty • Portability • Function



Dawn of a new Desktop



Beauty



Dawn of a new Desktop



Oxygen :: A Breath of Fresh Air

Highlights:

- Scalable icons (SVG)
- Widget and window styling
- Web site and application artwork
- Mouse cursors
- Audio theme

Why it matters:

- People eat with their eyes
- Usability part of the design process





Dawn of a new Desktop



Usability



- Modern and extensive HIG
- Research-driven development
- Community involvement: *“HIG Hunting Season”*

Why it matters:

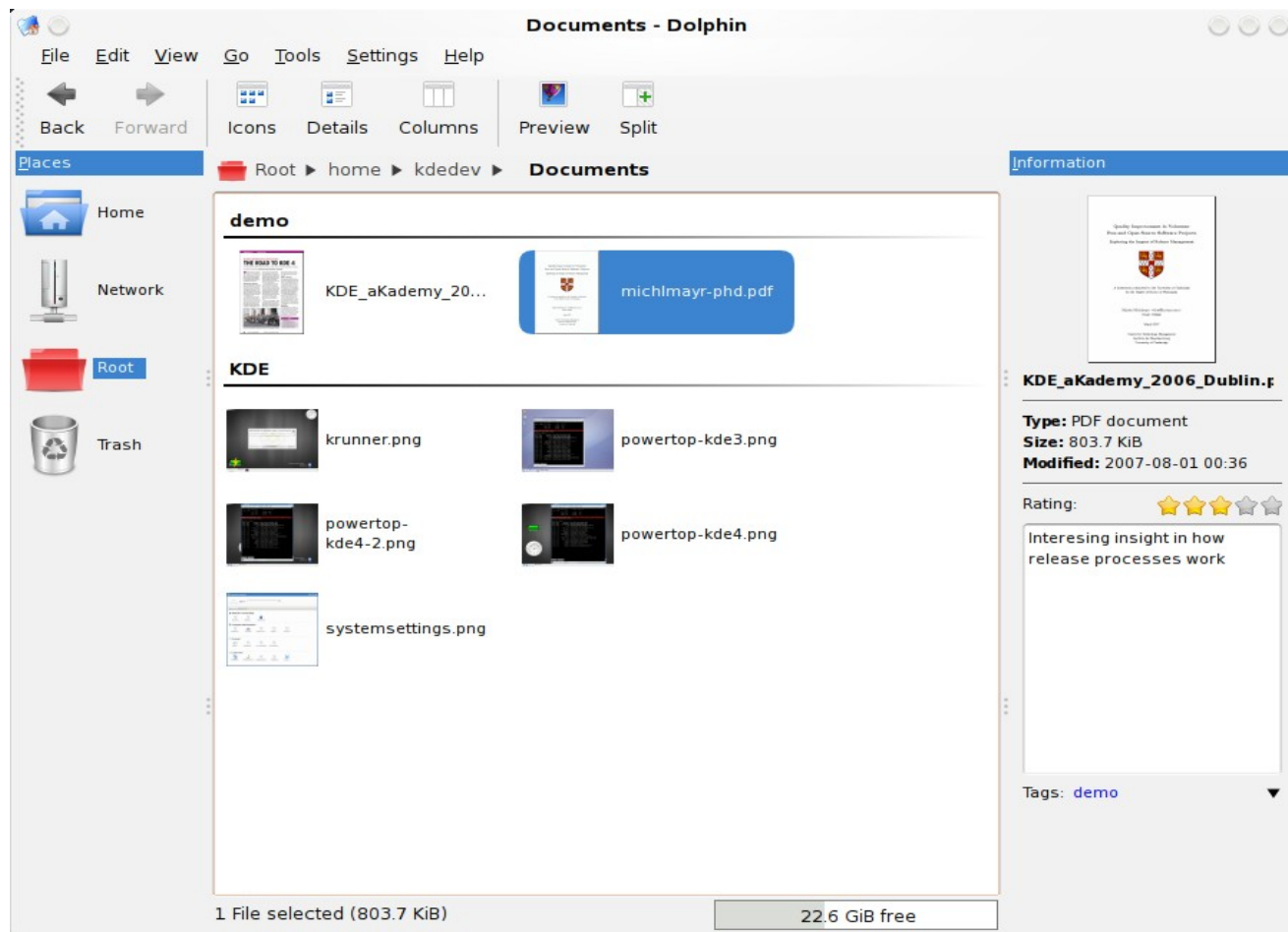
- Usable software makes users happy
- Guidelines give developers something to aim for



Dawn of a new Desktop



Dolphin :: The New Filemanager





Dawn of a new Desktop



Portability



Dawn of a new Desktop



Portability

Inbound

- Making it easier to run software in KDE



Outbound:

- Making it possible to run KDE software on various operating systems



Dawn of a new Desktop



Portability :: Standardization

- D-Bus
- Mimetype database
- Icon naming
- Search metadata
- Presence
- Notification
- Jobs





Dawn of a new Desktop



Platforms

	Libraries	Backends	Applications	Workspace
Linux	✓	✓	✓	✓
Solaris	✓	✓	✓	✓
BSD	✓	✓	✓	✓
*nix	✓	✓	⚠	⚠
Windows	✓	⚠	⚠	✗
MacOS	✓	⚠	⚠	✗



Dawn of a new Desktop



Function



Dawn of a new Desktop



Solid :: Hardware Awareness

Highlights:

- Platform specific back-ends (e.g. HAL/D-Bus)
- Makes hardware integration accessible to developers

Why it matters:

- Users expect software to respond to hardware events
- Future proof
- Portable





Dawn of a new Desktop



Sonnet :: Spelling

SpellingCheck Example

תפיסת הפרשנות הרווחת של החוקרים הייתה לתאר את האמנות היוונית כמתפתחת על פי רצף זמן וחותרת לכדי סינתזה בין תיאור ריאליסטי בעיצוב האנטומיה, לבין רתימת אותו ריאליזם לשם ביטוי ה"אידיאל" של התקופה. גישה זו התבטאה בעיצובה של התקופה "הקלאסית", כמופת של אידיאל זה.

São Paulo ist die Hauptstadt des gleichnamigen Bundesstaates in Brasilien. Die Stadt ist das wichtigste Wirtschafts-, Finanz- und Kulturzentrum sowie Verkehrsknotenpunkt des Landes mit Universitäten, Hochschulen, Theatern und Museen. In der eigentlichen Stadt São Paulo leben 10.021.437 Menschen, in der Agglomeration Grande São Paulo 19.092.087. Damit ist sie eine der größten Metropolregionen der Erde und die bevölkerungsreichste Stadt auf der Südhalbkugel. Gleichzeitig ist sie der größte industrielle Ballungsraum in Lateinamerika. Die Stadt ist durch zahlreiche Einwanderer aus aller Welt multikulturell geprägt mit wesentlichen portugiesischen, italienischen, deutschen, libanesischen und japanischen Einflüssen. Die Einwohner der Stadt São Paulo heißen „paulistanos“

Hasekura Tsunenaga was a Japanese samurai and retainer of Date Masamune, the daimyo of Sendai. He led an embassy to Mexico and then Europe between 1613 and 1620 (called the Keichō Embassy), after which he returned to Japan. He was the first-ever Japanese official ambassador to the Americas and arguably Europe, and became the key protagonist in the first recorded instance of Franco-Japanese relations.





Dawn of a new Desktop



ThreadWeaver :: Using your Cores

Highlights:

- Easy multi-threading for applications

Why it matters:

- Multi-core is becoming more common
- Better application responsiveness





Dawn of a new Desktop



Strigi :: Search and Indexing

Highlights:

- Fast and light-weight
- Using D-Bus
- Social semantic desktop (NEPOMUK)



Why it matters:

- Massive amounts of data is the norm, not the exception
- *“Why is it easier to find stuff on the internet than on my own PC?”*



Dawn of a new Desktop



Plasma :: The Workspace Evolving

Highlights:

- First impression beauty, long term usability
- New concepts for the desktop
- Easily extensible: engines and visualisations

Why it matters:

- The desktop should be usable, rather than an icon ghetto
- Organics make dealing with the computer more natural





Dawn of a new Desktop



Phonon :: Multimedia Made Easy

Highlights:

- Pluggable backends: Gstreamer, Xine
- Select device per function
- Simple API

Why it matters:

- Multimedia should “*just work*”
- Future proof
- Portable



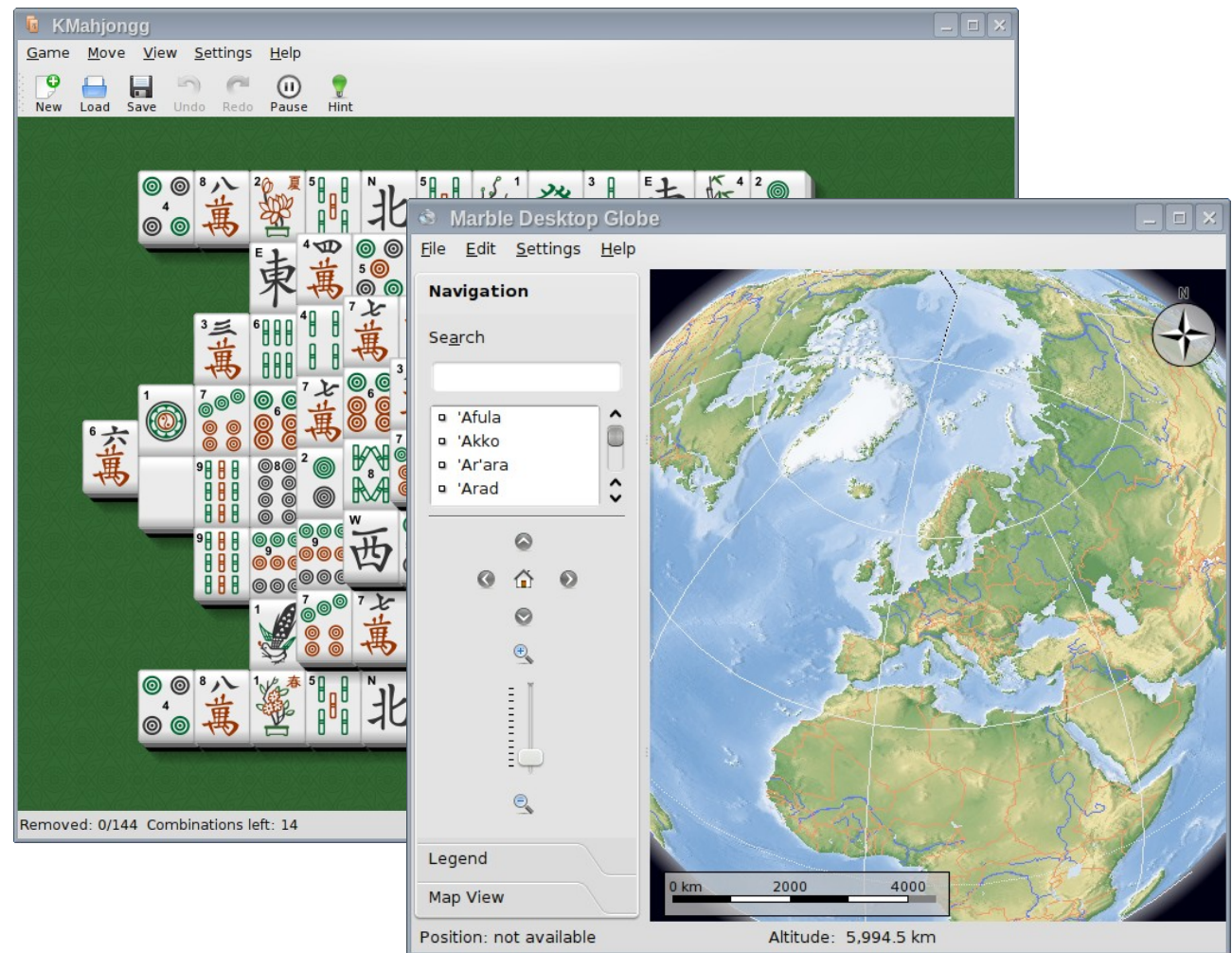


Dawn of a new Desktop



More Highlights

- Decibel
- Akonadi
- Games
- KDE-EDU
- KWin Compositing





Dawn of a new Desktop



... and remember:

KDE4.0 is not KDE4

It's just the beginning!

... the beginning of something amazing!





Dawn of a new Desktop



Get involved!

- Promotional work
- Documentation
- Translation
- Artwork
- Websites and Systems admin
- User support
- Hacking
- OpenUsability

Konqi wants you!





Dawn of a new Desktop



Get Involved!

- Engaging in the community:
 - Email: <http://kde.org/maillinglists/>
 - IRC: #kde-devel, #kde-artists, #kde-promo, ...

Installing KDE4:

- http://techbase.kde.org/Getting_Started





Dawn of a new Desktop



Q & A

